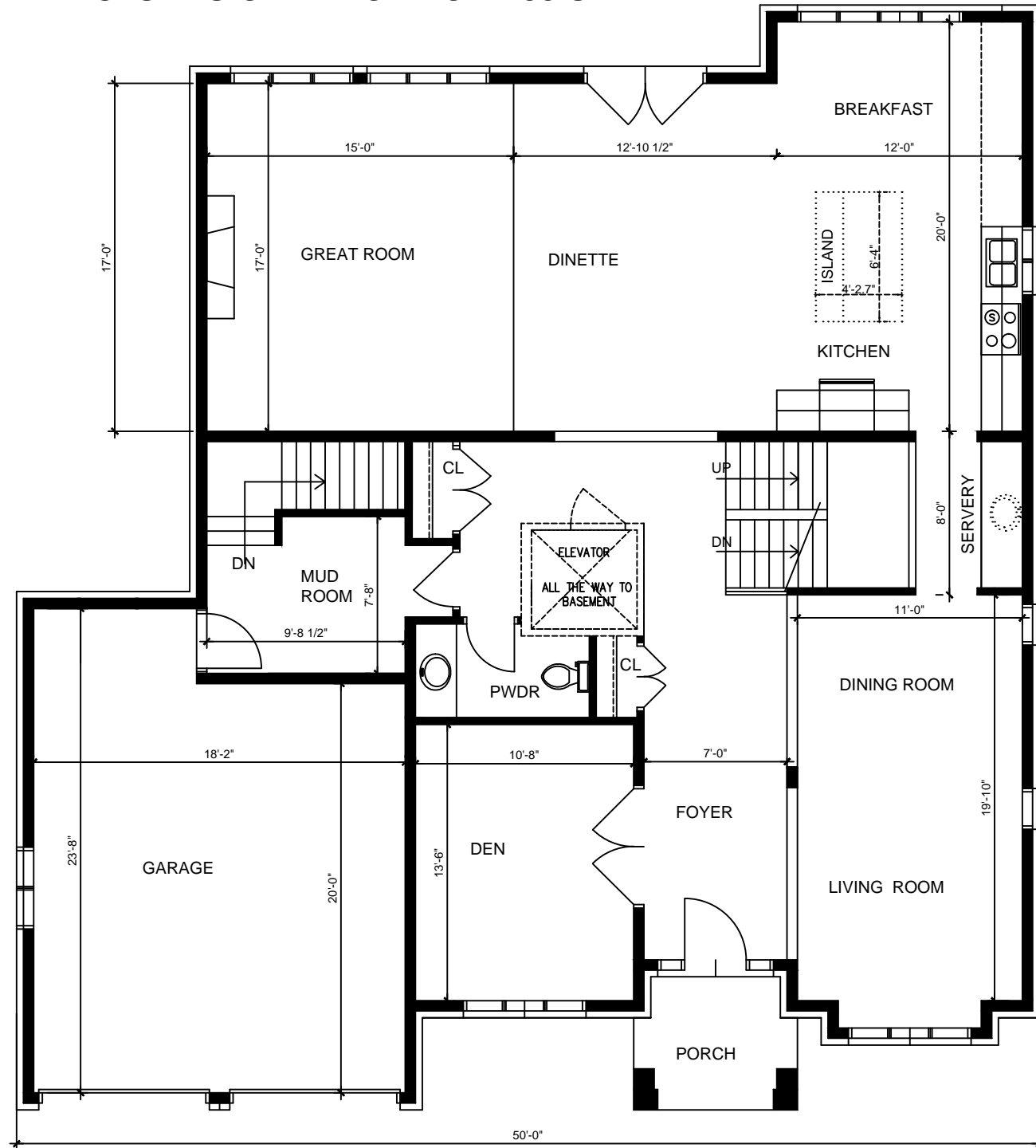


# The Woodview

INCLUDES OPEN TO ABOVE 88 S.F.

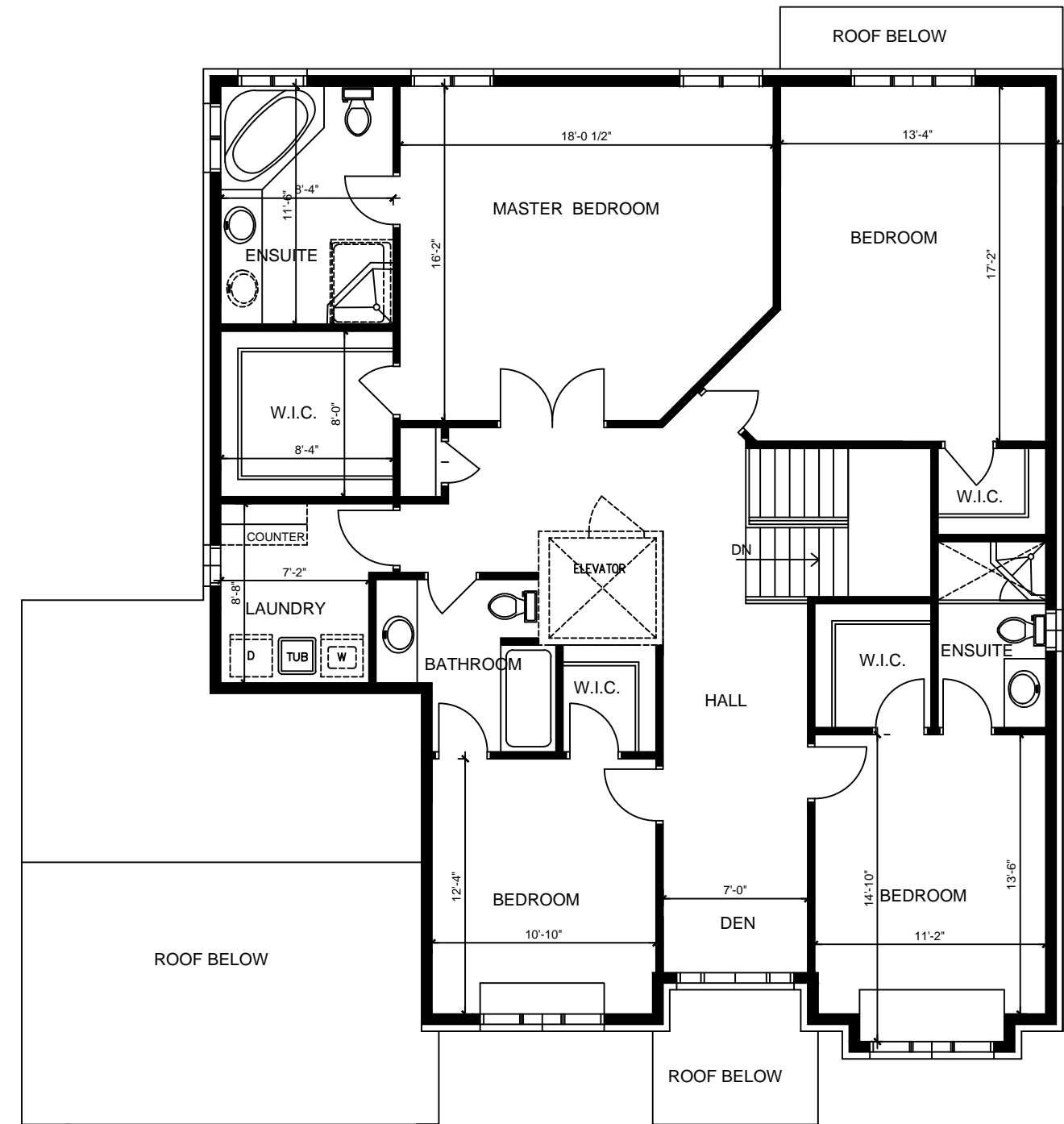
Interior layout changes can be done at no extra charges



GROUND FLOOR PLAN 1798 s.f.

All house renderings and interior drawings are artist's conceptions. Material specifications and floor plans are subject to change without notice.

All floor plans are approximate dimensions. Note: Actual usable floor space may vary from the stated floor area. Steps may vary at any exterior entrance ways due to grading. E&O.E.



2ND FLOOR PLAN 1760 s.f.

Zeina Homes is registered Builder with the Tarion Warranty Corporation, which administers the Ontario New Home Warranties Plan Act. Optional Accessories .....