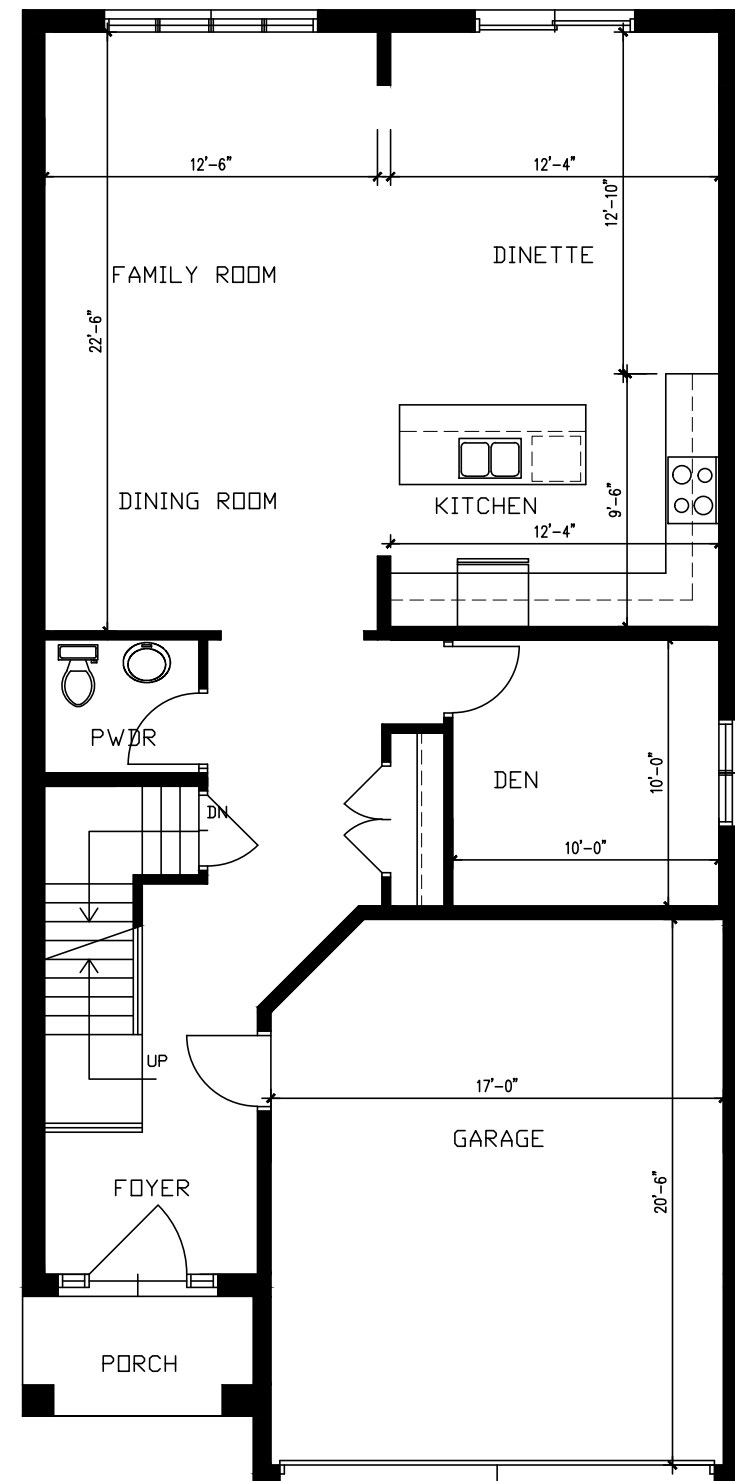
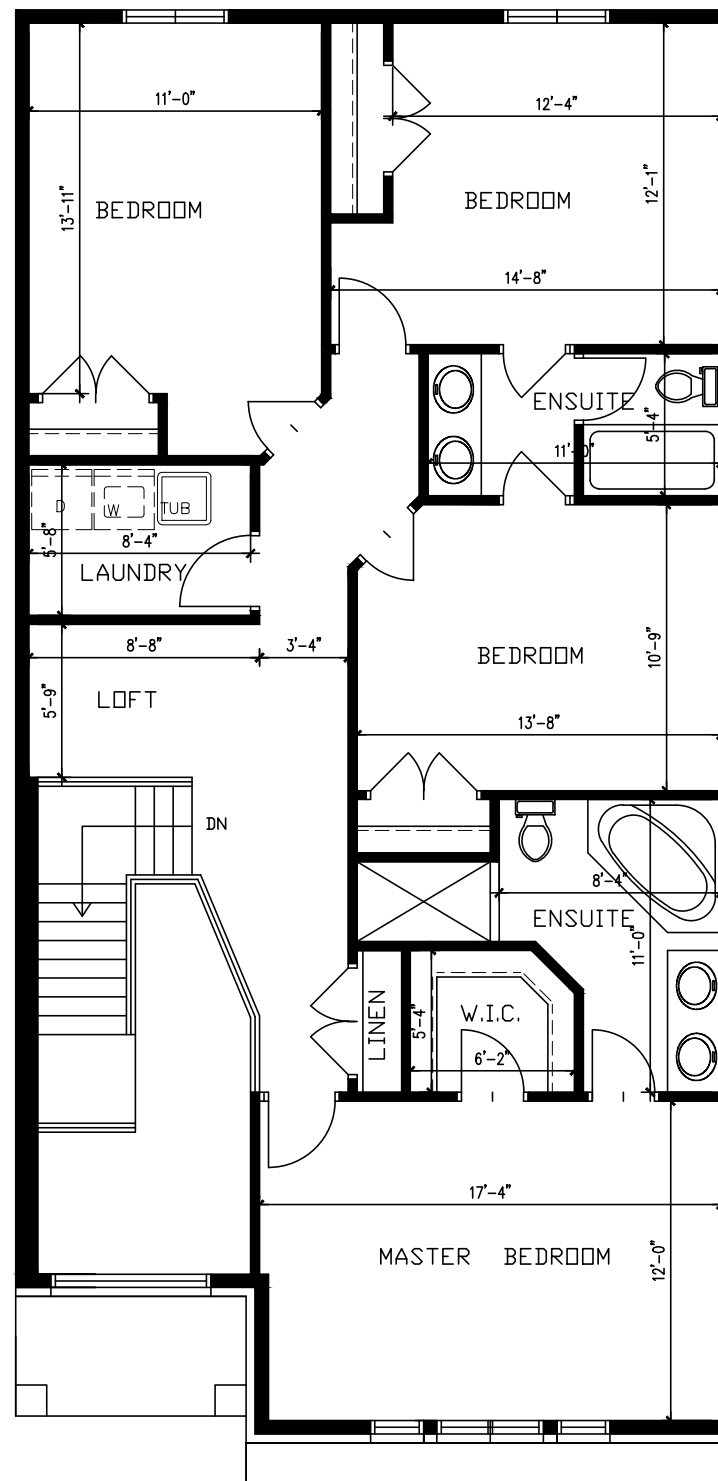


# THE YUNAN

2466 S.F.



GROUND FLOOR 1060 S.F.



SECOND FLOOR 1406 S.F.

INCLUDES OPEN TO ABOVE 112 S.F.

All house renderings and interior drawings are artist's conceptions. Material specifications and floor plans are subject to change without notice. All floor plans are approximate dimensions. Note: Actual usable floor space may vary from the stated floor area. Steps may vary at any exterior entrance ways due to grading. E&D.E.

Zeina Homes is registered Builder with the Tarrion Warranty Corporation, which administers the Ontario New Home Warranties Plan Act.

Interior layout changes can be done at no extra charges